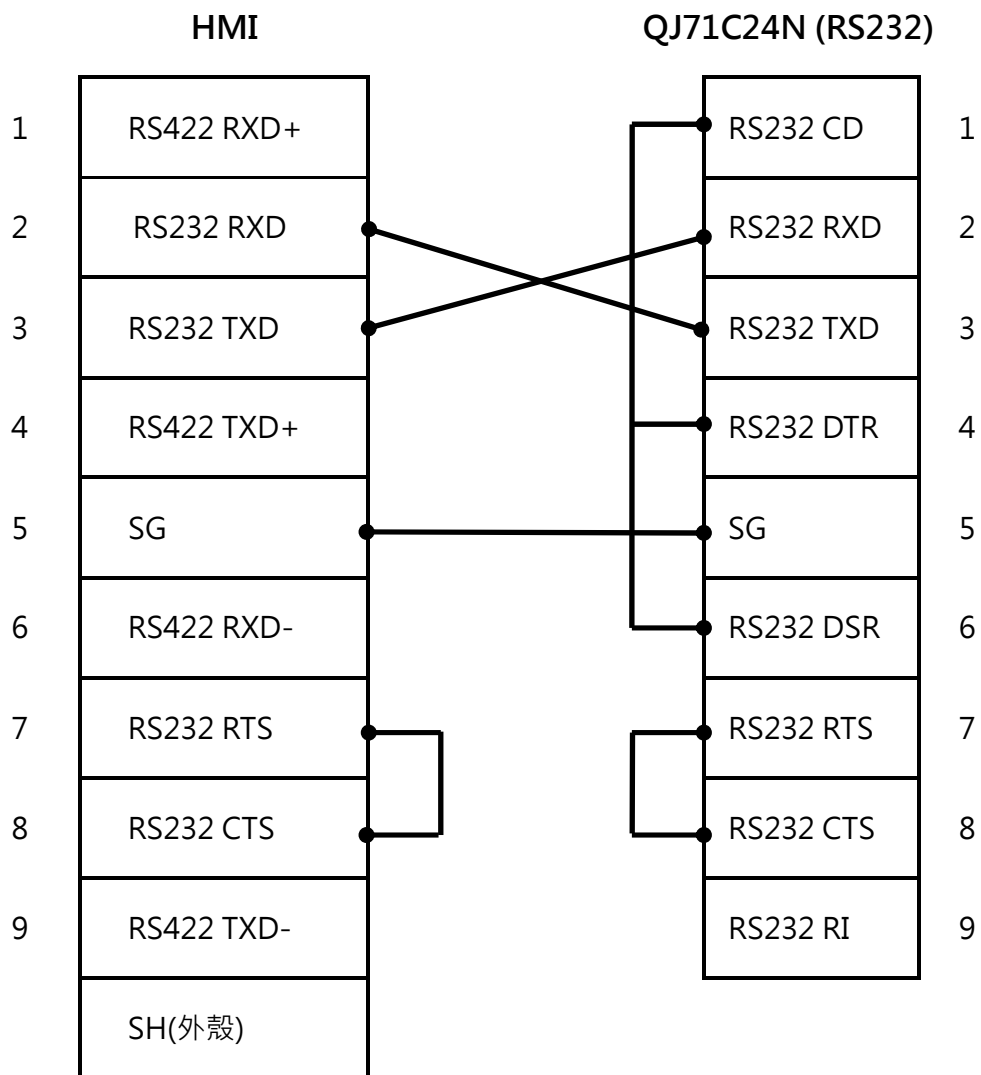
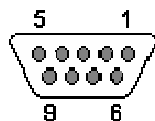


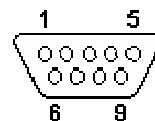
MITSUBISHI QJ71C24N 通訊模組 RS232 接線圖



DB9(母)接頭

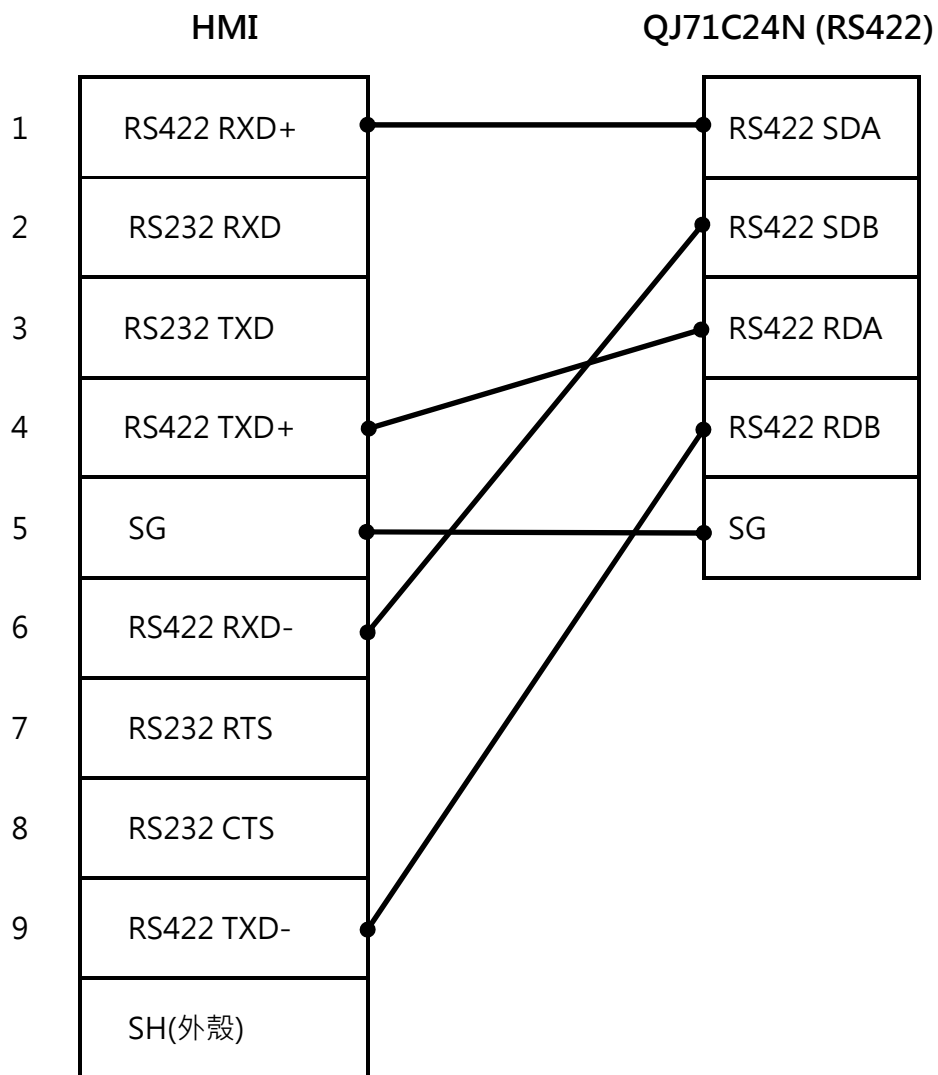


DB9(公)接頭

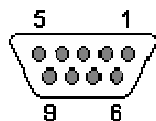


註:VX301/VX360T 連接時,只能使用 COM1(RS232).

MITSUBISHI QJ71C24N 通訊模組 RS422 接線圖

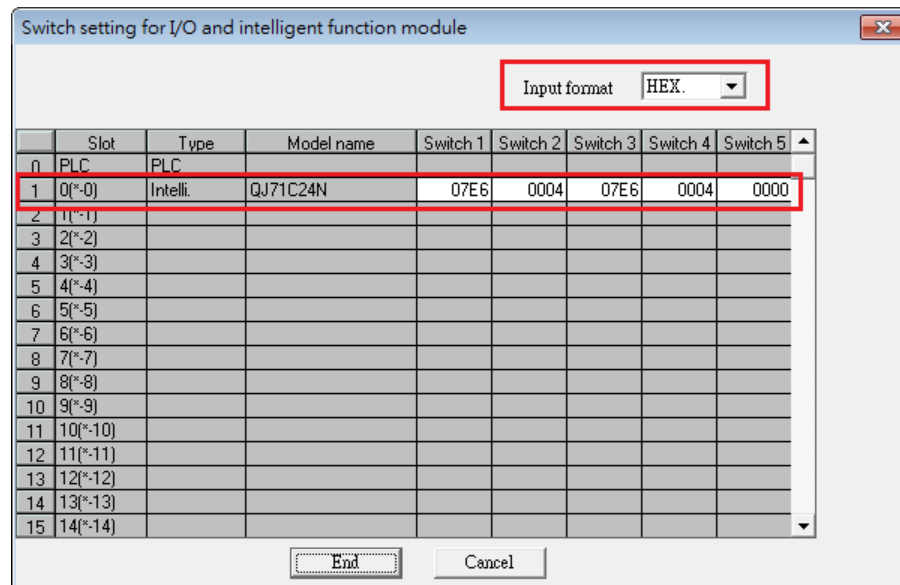
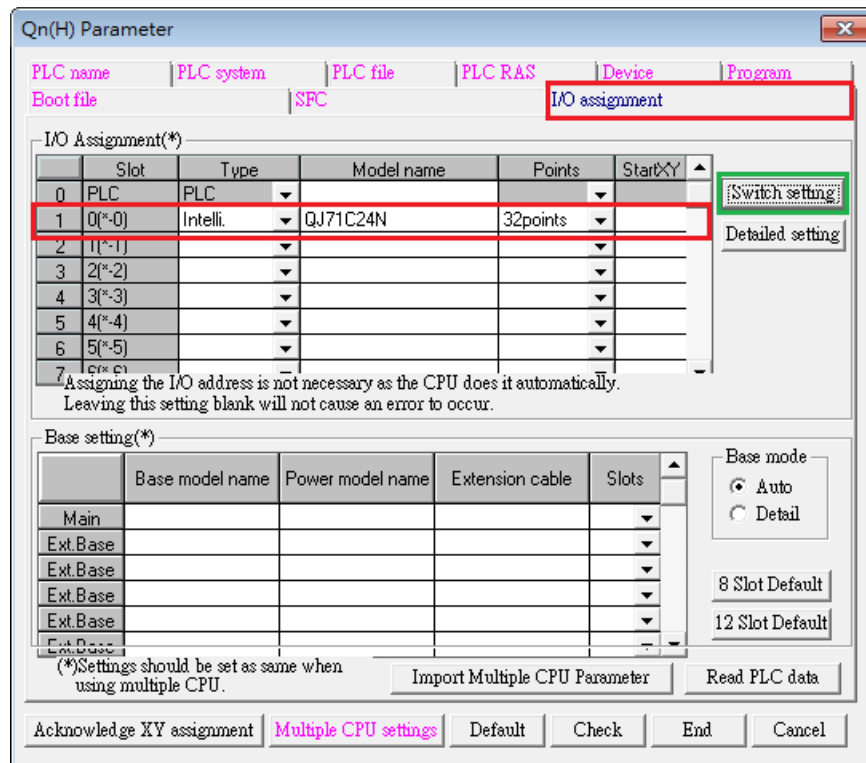


DB9(母)接頭



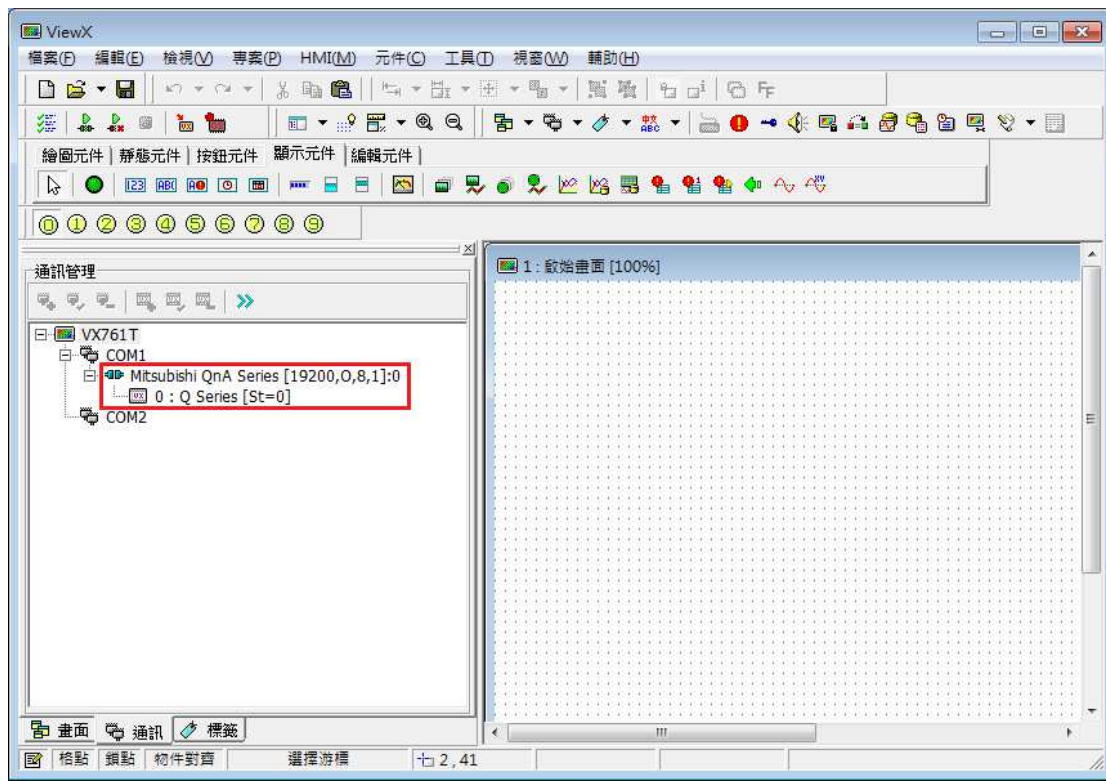
註: VX301/VX360T 連接時, 只能使用 COM2(RS422).

PLC 設定事項



通訊參數:19200,資料位元 8 位元, 停止位元 1 位元,奇同位檢查, 站號:0, 通訊格式 4.

HMI 規劃軟體注意事項



1. 通訊協定選擇 " Mitsubishi QnA Series"
2. 通訊參數 19200,奇同位,8 資料位元,1 停止位元.
3. PLC 裝置選 "Q Series", 站號設定為 0.